



User Guide

Comfort Plus Hands-Free Car Kit

CarTalk Hands-Free Car Kit

Take&Talk Hands-Free Car Kit Cradle

Intellectual property notices

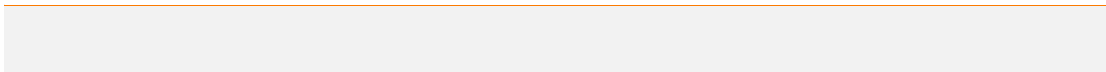
© 2006 Palm Inc. All rights reserved. Palm, Treo, and the Palm and Treo logos are among the trademarks or registered trademarks owned by or licensed to Palm Inc. All other brand and product names are or may be trademarks of, and are used to identify products or services of, their respective owners.

Disclaimer and limitation of liability

Palm Inc. and its suppliers assume no responsibility for any damage or loss resulting from the use of this guide. Palm Inc. and its suppliers assume no responsibility for any loss or claims by third parties that may arise through the use of this software. Palm Inc. and its suppliers assume no responsibility for any damage or loss caused by deletion of data as a result of malfunction, dead battery, or repairs. Be sure to make backup copies of all important data on other media to protect against data loss.

PN: 406-10672-00

v 0.0



Contents

| | |
|--|----|
| Welcome | 1 |
| What do I need to get started? | 1 |
| Comfort Plus Hands-Free Car Kit | 1 |
| CarTalk Hands-Free Car Kit | 2 |
| Take&Talk Hands-Free Car Kit Cradle | 2 |
| Chapter 1: Setting up | 3 |
| Installing the hardware | 3 |
| Configuring your car kit | 6 |
| Chapter 2: Using your car kit | 9 |
| Adjusting the call volume | 9 |
| Inserting the smartphone into the cradle | 10 |
| Adjusting viewing angle | 11 |
| Making a call | 12 |
| Receiving a call | 12 |
| Removing the smartphone from the cradle | 13 |
| Chapter 3: Common questions | 15 |
| I can't fit my smartphone into the cradle | 15 |
| The volume is too low | 15 |
| The radio doesn't mute when the phone is on | 15 |
| Callers can't hear me | 16 |
| The smartphone signal is weaker in the car kit | 16 |
| Calls are being answered without my knowledge | 16 |
| Why does the power to my car kit turn off when I turn off my ignition? | 17 |
| Where to learn more | 19 |

Regulatory information 21

Welcome

Congratulations on the purchase of your Palm® Comfort Plus Hands-Free Car Kit, Palm® CarTalk Hands-Free Car Kit, or Palm® Take&Talk Hands-Free Car Kit Cradle. This guide will help you to quickly set up your car kit so that you can make and receive your first calls.

What do I need to get started?

As you work through the instructions in this guide, you need the following:

- All the items that came in the box. Check the contents of your product package. The contents vary depending on which product you bought. (The sections that follow list the contents of the various product packages.)
- Palm® Treo™ 750 series smartphone.

Also, You must have your smartphone within range of cellular coverage.

Comfort Plus Hands-Free Car Kit

You should have received all the following items in the box.

Hardware

- Comfort Plus DSP cradle
- Slide mount
- BJH 40 ball joint mount
- Amplifier microphone
- Charging wires with fuses
- Audio wires
- Loudspeaker with bracket
- Multiband Little Flat III antenna
- Sleeve
- Mounting pieces, screws, and brackets

Documentation

- *Comfort Plus Installer Guide*
- *User Guide* (this guide)
- End User License Agreement

CarTalk Hands-Free Car Kit

You should have received all the following items in the box.

Hardware

- Take&Talk DSP cradle
- ECU box with charging & audio ports
- Docking station with round base mount
- Car stereo wires
- BJH 40 ball joint mount
- Amplifier microphone
- Charging wires with fuses
- Audio wires
- Loudspeaker with bracket
- Multiband Little Flat III antenna
- Sleeve
- Mounting pieces, screws, and brackets

Documentation

- *CarTalk Installer Guide*
- *User Guide* (this guide)
- End User License Agreement

Take&Talk Hands-Free Car Kit Cradle

You should have received all the following items in the box.

Hardware

- Take&Talk DSP cradle
- Sleeve

Documentation

- *User Guide* (this guide)
- End User License Agreement



CHAPTER

1

Setting up

Installing the hardware

The Comfort Plus and CarTalk kits require installation of hardware in your car. The installation can include screwing mounts into your dash or console, and splicing wires into your car's wiring and audio system. It is recommended that installation be performed by a professional installer. Before installing the kit hardware, be sure to consult the setup poster: *Comfort Plus Installer Guide* or *CarTalk Installer Guide*.

Both kits give you installation options that you can choose from:

Audio: The audio options depend on the type of car audio system you have.

- You have the choice of using the speaker included with the car kit or connecting your car kit to your car audio system. The **CarTalk Kit** includes a wire harness to connect to your car audio system speakers.

DID YOU KNOW? The **Comfort Plus Kit** does not include the wire harness to connect to your car audio system speakers, but custom harnesses are usually available for most cars. Ask your professional installer for more information.

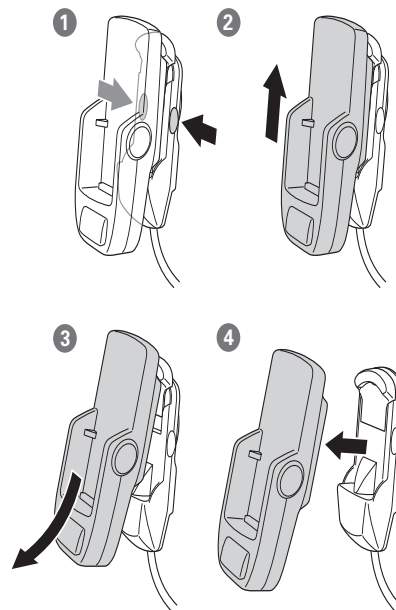
- Some car audio systems automatically mute when you are on a call. This feature is part of the car kit, but its function depends on the type of car audio system you have.

Mount: Both kits include a mount for your dash/console that requires screws. You can choose to install a mount that requires no visible screws. These mounts are sold separately. Ask your professional installer for more information.

For the Take&Talk Hands-Free Car Kit Cradle

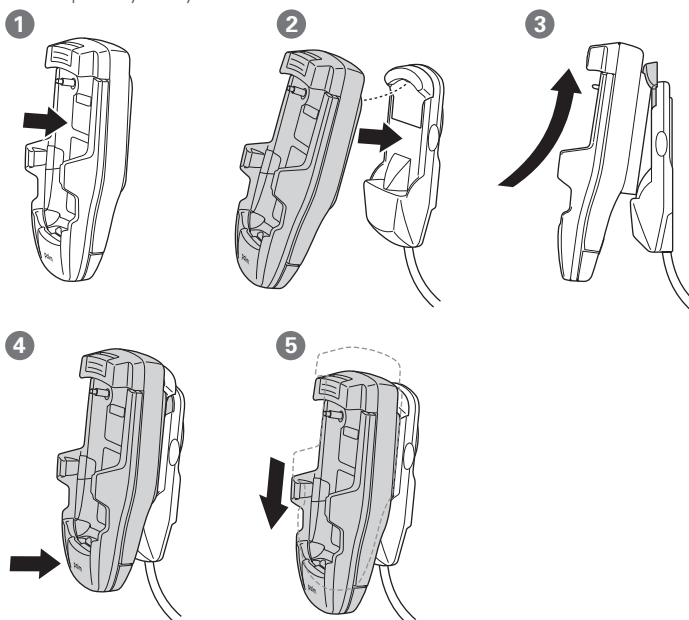
BEFORE YOU BEGIN You must have a CarTalk Hands-Free Car Kit already installed in your car.

- 1 Follow the illustrations to remove your old cradle.



2 Follow the illustrations to install your new cradle. cradle when it is open, you risk pinching your hand or finger.



IMPORTANT Be sure to close the cradle as shown in step 1. If you try to install the

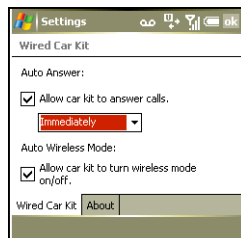


Configuring your car kit

The software for configuring your car kit is already installed on your Treo smartphone.

Configuring your car kit for use with the Palm® Treo™ 750 series smartphone

- 1 Press **Start**  and select **Settings**.
- 2 On the **Personal** tab, select **Wired Car Kit** .



- 3 On the **Wired Car Kit** tab, set the following options:

Auto Answer Determines whether the device in the car kit automatically answers a call and the time period before it answers the call.

To have the device automatically answer a call, check the **Allow the car kit to answer calls** box. Select the time period from the list.

NOTE Auto Answer does not use the length of the ringtone you have set on your phone, which can vary in length. The ringtone length is set at the standard ringtone length of 5 seconds. For example, two ringtones is 10 seconds.

Auto Wireless Mode Determines whether the wireless mode on the smartphone turns off after 55 minutes. See "Do I need Auto Wireless Mode?" on page 7.

If necessary, check the **Allow car kit to turn wireless mode on/off** box to have the car kit automatically turn off power.

- 4 Press **OK** .

Do I need Auto Wireless Mode?

The Auto Wireless Mode setting determines whether the car kit turns itself off after 55 minutes if it is not being powered by the car and you are not on a call. This 55-minute timer helps save the charge of your smartphone's battery.

To determine whether you need Auto Wireless Mode, you need to know whether your car sends power to its accessories when the ignition is off.

- You don't need to set Auto Wireless Mode if your car keeps sending power to accessories after you turn off the ignition.
- You need Auto Wireless Mode if your car turns off power to accessories when you turn off the ignition. We recommend that you select Auto Wireless Mode.

Here's what happens when you have Auto Wireless Mode selected: If 55 minutes go by after you turn off the ignition, and you are not on a call at the time, a message

appears on your smartphone that says wireless mode is about to be turned off.

- If you tap the screen anywhere within five seconds of the appearance of the message, wireless mode stays on and the timer is reset to turn off wireless mode in another 55 minutes.
- If you do nothing, wireless mode is turned off.

1

SETTING UP

CHAPTER

8

CONFIGURING YOUR CAR KIT




CHAPTER

2

Using your car kit

Adjusting the call volume

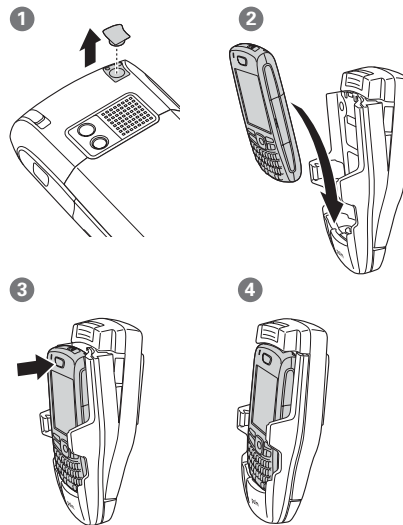
You must set the volume on the smartphone before you insert into the cradle.

- 1 Turn the Ringer switch to On.
- 2 Press the **Volume** button on the side of your smartphone.
- 3 Set the **volume slider** to maximum sound.
- 4 Tap the screen to dismiss the volume slider or press **OK** .

Inserting the smartphone into the cradle

BEFORE YOU BEGIN Do the following:

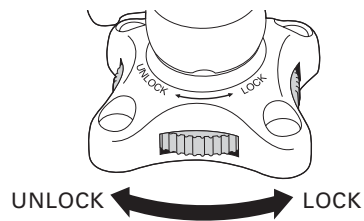
- See “Adjusting the call volume” on page 9).
 - Close the windows in the car to improve sound quality.
- 1 Remove the black rubber antenna cover from the back of the smartphone. The cover must be removed completely.
 - 2 Insert the smartphone into the cradle, bottom of the smartphone first.
 - 3 Push the smartphone into the cradle so that it is firmly seated with the screen facing toward you.
 - 4 Press the top of the cradle until it clicks.



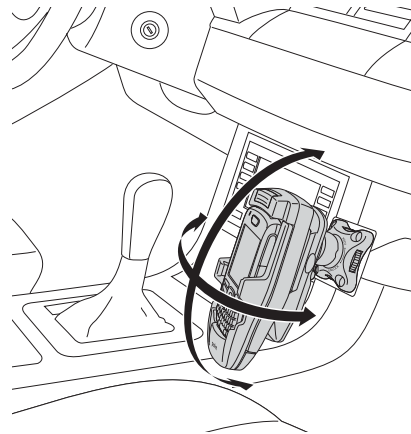
Adjusting viewing angle

If you have your cradle on a ball-joint mount, adjust the cradle so you can see the smartphone screen when you are driving.

- 1 Turn the ball-joint mount lock screw until the cradle is unlocked and can be freely moved.



- 2 Adjust the cradle until the smartphone it is facing you when you are in the driver's seat.



- 3 Tighten the ball-joint mount screw until the cradle is locked and can't be moved.

Making a call

Once the smartphone is inserted in the cradle, you can make a call using any of the ways you usually make calls—using the Dial Pad, a speed-dial button, entering a contact name, and so on.

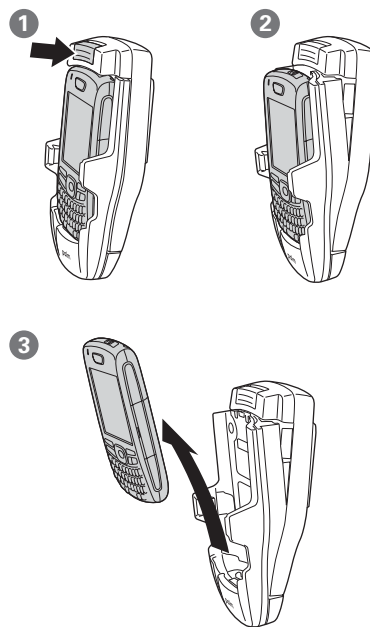
You can use voicemail, the wireless features, or any of the applications in the same way you always have. See the documentation that came with your smartphone for more information.

Receiving a call

When you receive a call, you can manually answer it by pressing the **Phone/Send** button or you can allow the smartphone to automatically answer the call. The number of rings depends on the Auto Answer setting (see “Configuring your car kit for use with the Palm® Treo™ 750 series smartphone” on page 6.)

Removing the smartphone from the cradle

- 1 Press the button on top of the cradle until the cradle releases the smartphone.
- 2 Lift the smartphone up and out of the cradle.



2

USING YOUR CAR KIT

CHAPTER

14

REMOVING THE SMARTPHONE FROM THE CRADLE



Common questions

I can't fit my smartphone into the cradle

Each cradle is made for a specific model or series of smartphones. Make sure you have the right cradle for your smartphone.

The volume is too low

- 1 Remove the smartphone from the cradle.
- 2 Press the **Volume** button on the side of your smartphone.
- 3 Set the **volume slider** to maximum sound.

4 Tap the screen to dismiss the volume slider.

5 Put the smartphone back into the cradle.

The radio doesn't mute when the phone is on

Some car audio systems automatically mute when the car kit becomes active. This feature depends on the type of car audio system you have. If you have a system that does not mute automatically, you'll need to turn down the volume on the audio system manually.

Callers can't hear me

Do the following:

- Close your car windows, turn off your radio, turn down your air conditioning, and remove any other noise makers in your car.
- Make sure that the microphone is pointed at your mouth and is about one foot or 30 cm away from your mouth.
- Make sure there is power to the car kit. See “Do I need Auto Wireless Mode?” on page 7.
- Check whether the multi-connector contacts on the bottom of the smartphone need cleaning. Using a clean, dry toothbrush, gently brush the contacts to clean out dirt or grime.
- Perform a soft reset on the smartphone.
- Go back to the professional installer. Ask them to check for a loose connection or other problem with the installation.

The smartphone signal is weaker in the car kit

The connection to the car kit antenna is loose. Go back to the professional installer who installed the car kit for repairs.

Calls are being answered without my knowledge

- 1 Remove the smartphone from the cradle.
- 2 Turn the ringer switch on and set the volume. See “Adjusting the call volume” on page 9.
- 3 Turn **Auto Answer** off or change the number of rings from **Immediately** to one or two rings. See “Configuring your car kit” on page 6.
- 4 Insert the smartphone back into the cradle.

Why does the power to my car kit turn off when I turn off my ignition?

Your car kit behaves like any other accessory in your car. In some cars the power to the accessories turns off when the ignition key is turned off; in other cars the power to the accessories remains on. How your car accessories behave usually indicates whether your car kit remains on after you turn off your ignition. For cars where power to the accessories turns off, the car kit has a timer that automatically turns off wireless mode to save the battery charge on your device. See "Do I need Auto Wireless Mode?" on page 7.



COMMON QUESTIONS

CHAPTER

18

WHY DOES THE POWER TO MY CAR KIT TURN OFF WHEN I TURN OFF MY IGNITION?

Where to learn more

For information on your Comfort Plus Hands-Free Car Kit, CarTalk Hands-Free Car Kit, or Take&Talk Hands-Free Car Kit Cradle:

Customer service For questions about your car kit, contact:

US / North America support (US - Eastern time):

- Phone: +1 (800) 232-3594 or +1 (732) 225-0246
- Email: alan@buryelektronik.com or alan@celltechsolutions.net

Rest of World support (Central European time):

- Phone: +49 (0) 180 5 842468 5463 or 0870-870-7410
- Email form: <http://www.thb.de/main.php?lang=en&mode=kontakt>

Online support from Palm For up-to-date downloads, troubleshooting, and support information, go to www.palm.com/carkit.

For information on your Palm® Treo™ 750 series smartphone:

User Guide The User Guide provides complete information on using your phone, including descriptions of advanced features not included in this quick guide. The User Guide is available on the Windows Mobile Getting Started Disc, or you can install it from the CD to your computer. To access the User Guide on your computer, double-click the **Treo 750 User Guide** icon on your computer desktop.

Online support from Palm For up-to-date downloads, troubleshooting, and support information, go to www.palm.com/us/support/treo/treo750 or www.palm.com/support/treo/treo750v.

Regulatory information

**Query: We need to include the
Bury Warranty here.**

